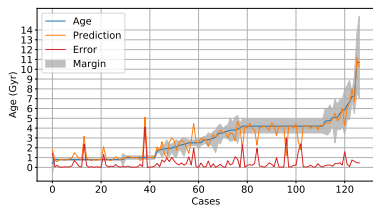


AI for dating stars: a benchmarking study for gyrochronology
Supplementary Material

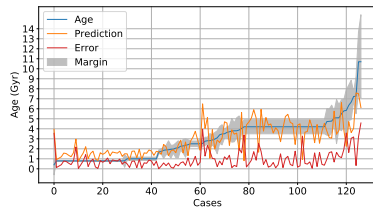
Andrés Moya
Universidad Politécnica de Madrid
a.moya@upm.es

Jarmi Recio-Martínez
University of Alcalá
jarmi.recio@edu.uah.es

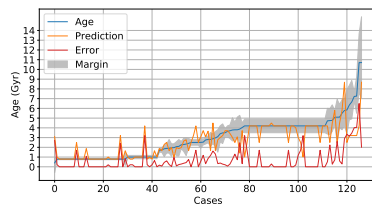
Roberto J. López-Sastre
University of Alcalá
robertoj.lopez@uah.es



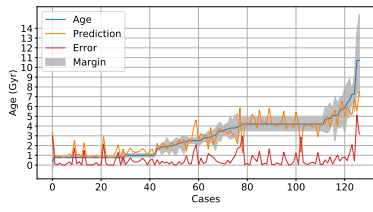
(a) nnet



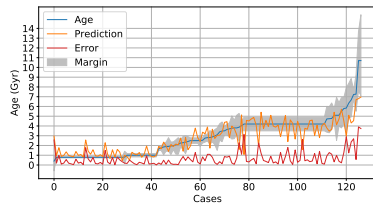
(b) lr



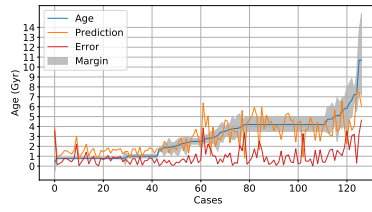
(c) dtr



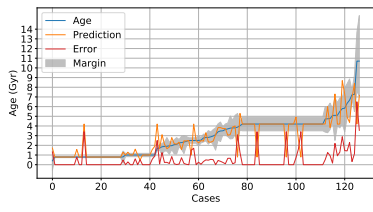
(d) rf



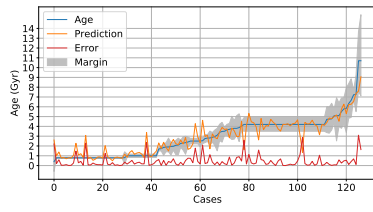
(e) svm



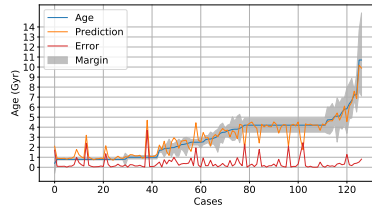
(f) bayes



(g) knn



(h) gp



(i) stacking

Figure 1: Benchmark A. Detailed prediction for each of the models. We show the ground truth age (in blue), the prediction of the models (in orange), and the corresponding error (in red).

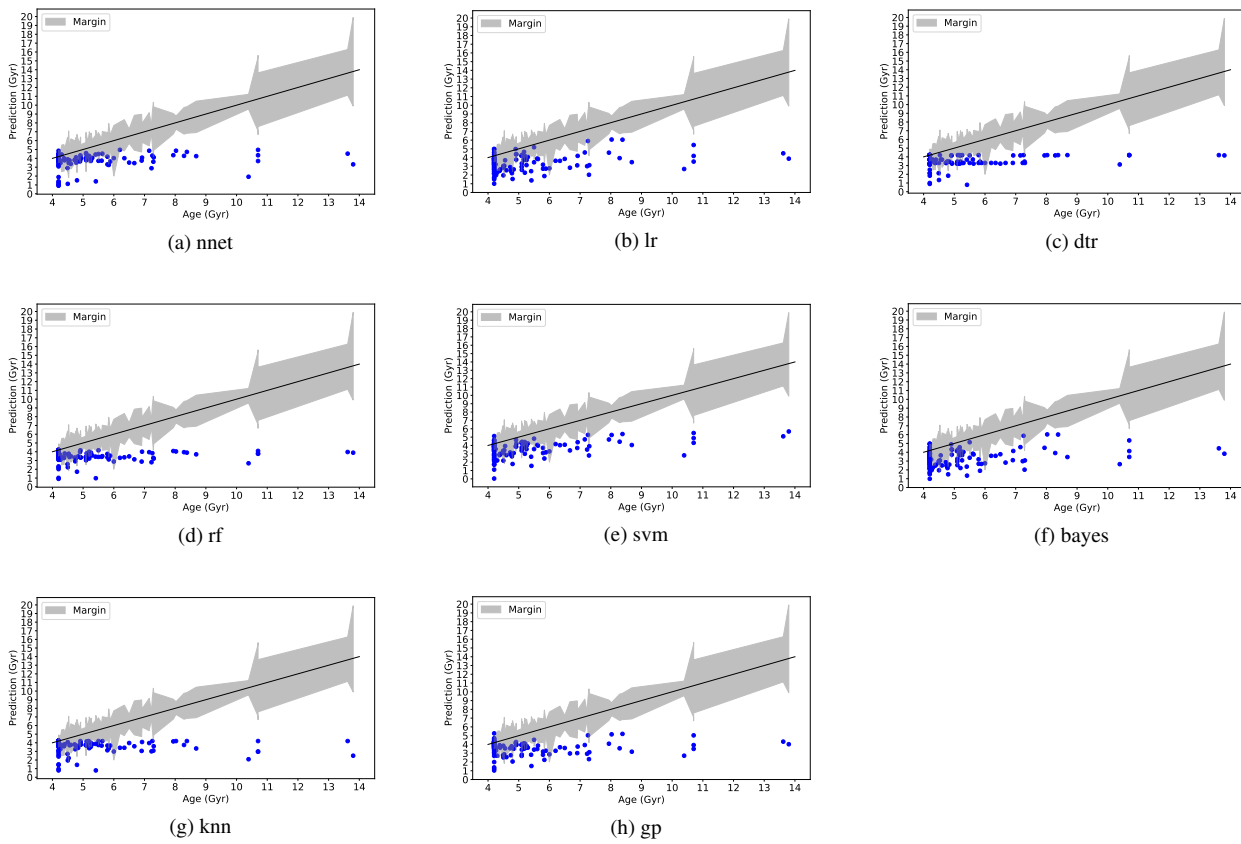


Figure 2: Benchmark B1. Detailed prediction for each of the models. We show the ground truth age (in black), the prediction of the models (in blue). The confidence margin provided by the dataset is shown in grey.

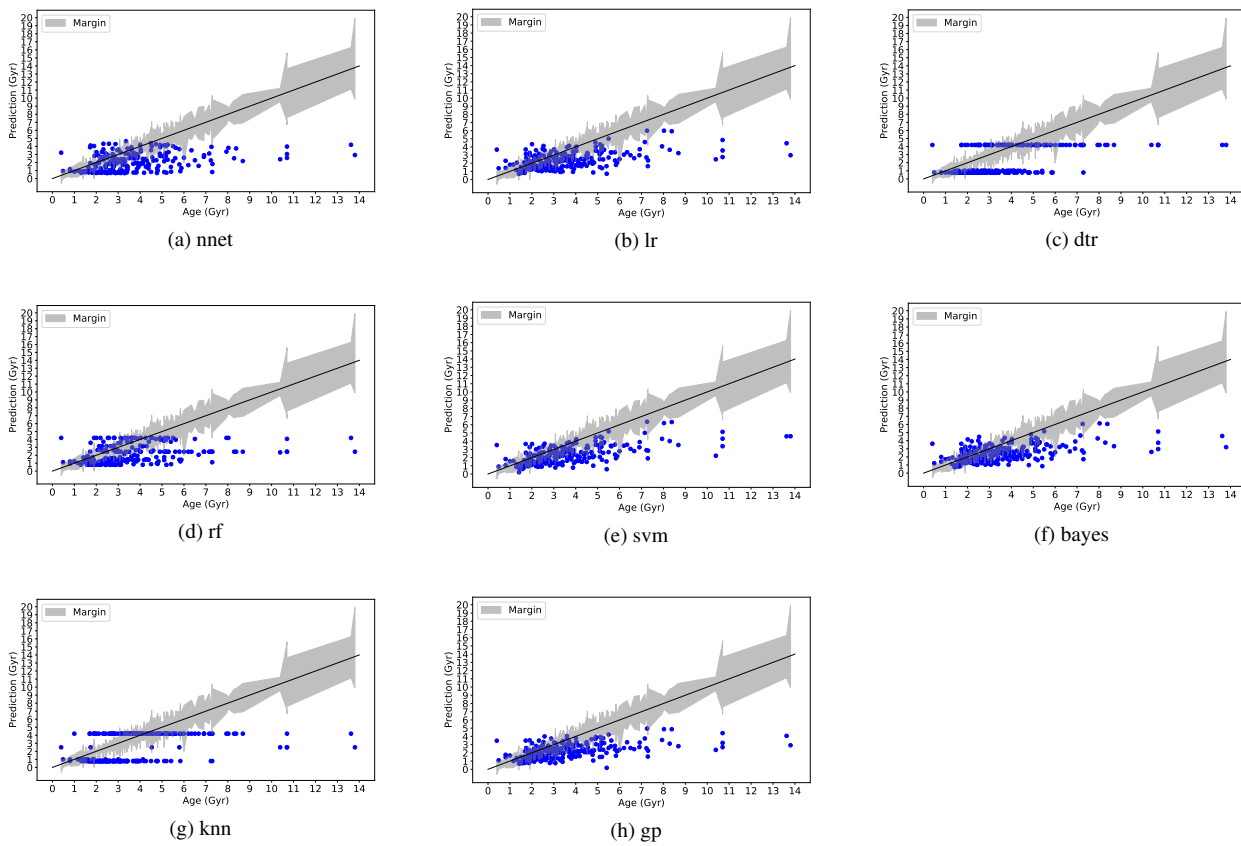


Figure 3: Benchmark B2. Detailed prediction for each of the models. We show the ground truth age (in black), the prediction of the models (in blue). The confidence margin provided by the dataset is shown in grey.

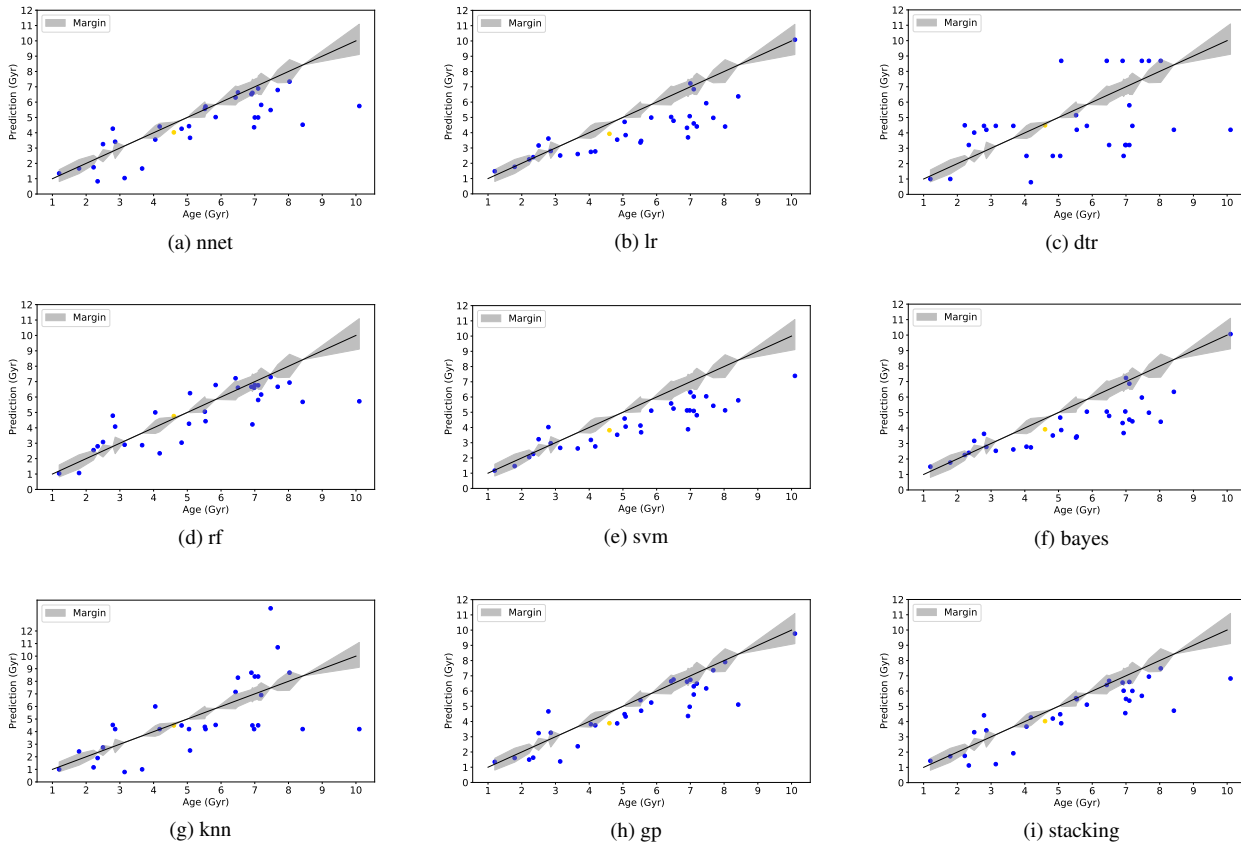


Figure 4: Benchmark C. Detailed prediction for each of the models. We show the ground truth age (in black), the prediction of the models (in blue). The confidence margin provided by the dataset is shown in grey. Age predictions for the Sun appear in yellow.